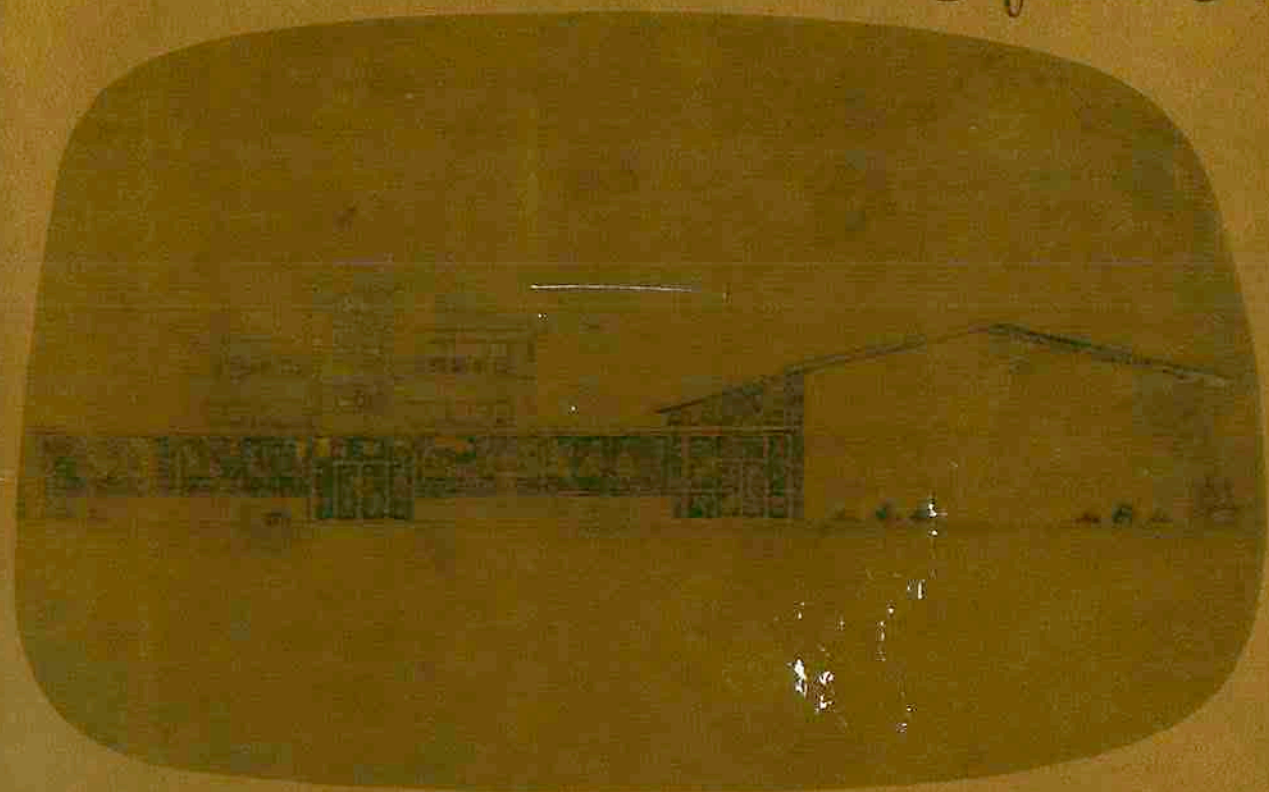


*Fiftieth Anniversary*



*Almont High School 1920--1970*

# Foreward

A dream became a reality—AHS Alumni now have the pleasure of renewing friendships in memory of a week-end in June 1970.

Time and effort were devoted in making arrangements to be present at the reunion, and sincere interest was proven by the attendance of former students from far and near.

May this booklet serve to bring back delightful memories of a happy occasion.

Nathalie Thorson  
General Chairman

# AHS REUNION HIGHLIGHTS

The fifty-year Almont High School Reunion is past history, but we hope this booklet will serve as a fond memory for those who attended and give a glimpse of the happy events for those unable to come. Graduates assembled from 22 states besides North Dakota and represented fields of medicine, agriculture, education, law, government, commerce, industry, communications, home-making, cosmetology, and the Armed Forces.

Saturday p.m., June 27, the doors of the school opened with a general feeling of excitement and anticipation. During registration and tours of the school, halls echoed with shrieks of joy at meeting again the classmates and old friends of yesteryear. Name tags were much appreciated in associating correct names with right faces! The old classrooms were most popular, especially the assembly with the picture gallery of former graduating classes. Coffee and cookies were served all afternoon in the halls and a favorite spot was the bulletin board display of old pictures, announcements, and other mementos. As one graduate exclaimed it was a completely emotional experience but if one laughed enough you wouldn't cry!

The motto "Strive and Succeed" which graced the front of the stage has been chosen by the Class of 1920 as well as the Class of 1970. The program emceed by Nathalie Hanson Thorson opened with a poem written and read by Lillian Pederson Peterson, followed by a tableau "Through the Years" presenting the history of the Almont High School by decades. As the curtain rose on the first scene, a replica of the first Almont school was seen with two children dressed in clothes of that generation playing in the school yard. The teacher, Arlene Kilen, rang the school bell, the children took their places at old-fashioned desks and everyone joined in singing "School Days" and songs written for the occasion by Eleanor Pederson Hillemann and Burton Nelson.

The second scene was the beginning of the first decade (1920) featuring all three members of the first graduating class of Almont High School sitting in their old desks. The class composed of Thelma Hyde Klingensmith, Edith Bird Stigen, and Andrew Willman were introduced and each spoke briefly.

The program progressed, and as each decade had the spotlight, the highlights of that period were shown through styles, music, and military presentation.



The cake made and decorated by Elvira Ramsland Thiel indicates books and striving as necessary for graduation caps and success in life.



Musical numbers included:

Male Quartette—Chris Halvorson, Dr. Leon Jacobson, Sig Peterson, and Vernon Knutson.

Instrumental Number—Music from the 20's—Mark Willman, Rudy Feland, Sig Peterson, and Marjorie Nelson, Peterson.

Vocal Solo—Green Hills of Home and a medley of songs from the 30's—Vernon Knutson.

Vocal Trio—Medley of songs from the 40's—Marlys Knutson Dolezol, Audrey Nelson Olson, Frances Nelson Rusch.

Vocal Solo—James Harper

Vocal Solo—Elliot Olson

Men's Chorus Medley—Chris Halvorson, Mark Willman, Sig Peterson, Roman Peterson, Vernon Knutson, Duane and Joel Johnson, Dr. Leon Jacobson, Harold Foley, Marshall Feland, Harold Halvorson, James and Gene Harper.

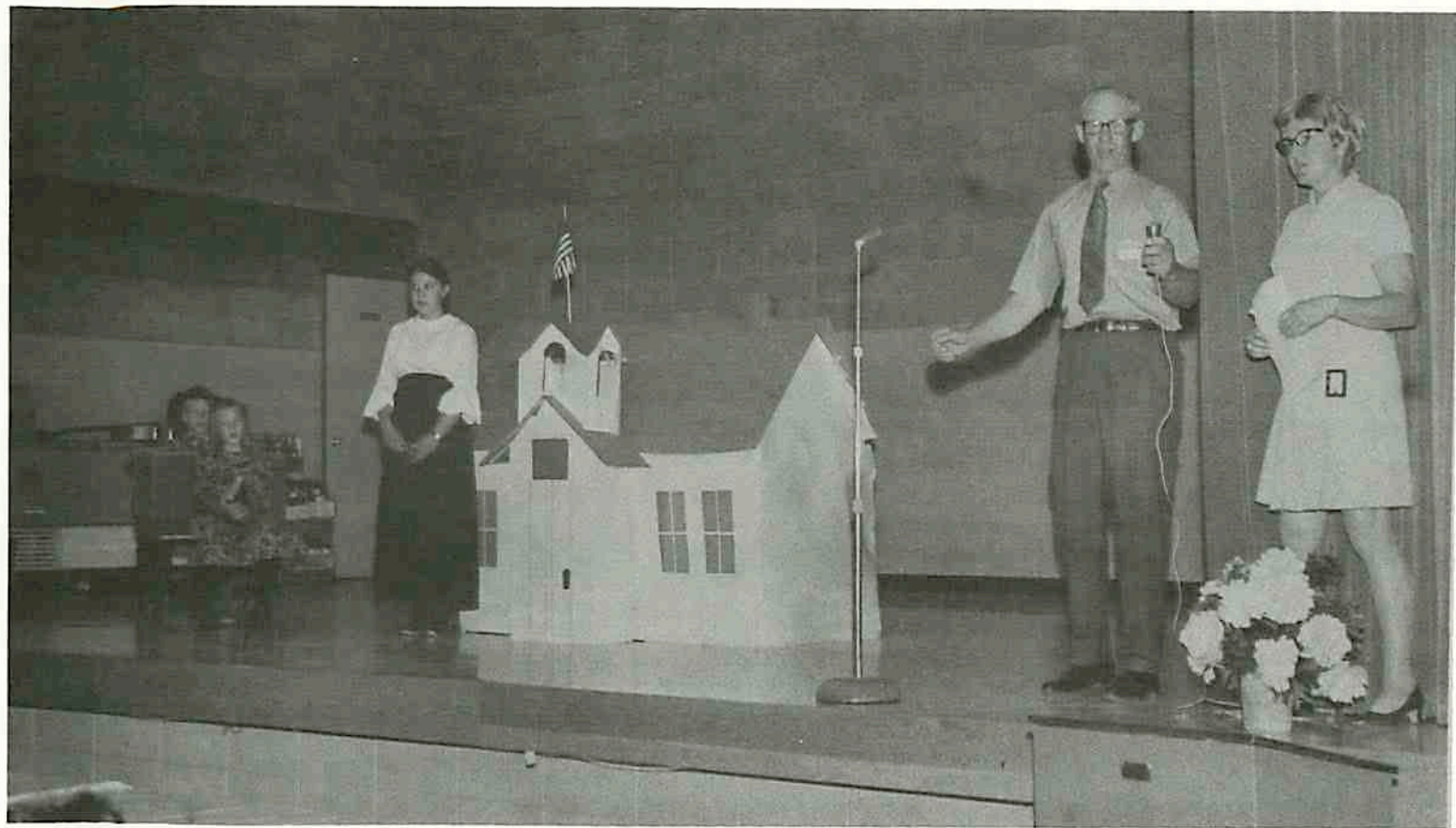
Piano background music and accompaniments were by Marjorie Peterson.

Students modeling the clothing and representing the branches of military service were Melissa Olson, Brad Striegel, Arlene Kilen, Jill Anderson, Darnell Christianson, Kathy Renner, Lynell William, Beverly Hutchinson, Joan Feland, Kerry Wanstrom, Terry Dawson, and Greg Olson.

Impromptu remarks and words of thanks were made by: Alice Anderson Ternstrom, Valborg Peterson Fisher, Dr. Leon Jacobson, William Weiss, Mrs. Chris Halvorson, Dagmar Pederson Stoeckel, Kathleen Kelsven Edwards, Marion Kelsven, Phyllis Hyde Grove, Mildred Pederson Olson, Dr. Gordon Olson, Leon Olson, Dr. Duane Hyde, Dr. Roger Becklund, Eileen Becklund Friberg, Herbert Thorson, Miss Hilda Johnson, Earl Dawson, Richard Hoovestol, June Pederson Hove, Burton and Allan Fallgren, and Janet Feland Hansen.

A former graduate, Evelyn Batemen Peterson, presented the school with a ceramic plaque with words of appreciation inscribed. Mary Jane Thorson greeted the audience on behalf of the Class of 1970 and the program ended with singing God Bless America.

Six o'clock buffet supper was catered and served in the school auditorium to 375 people. A beautiful cake, baked and decorated by Elvira Ramsland Thiel, served as the dessert and was cut by Elvira and Lucille Ramsland Reeff.



Sig Peterson directs singing of "School Days" and other songs. Also pictured is Nathalie Hanson Thorson, emcee, Arlene Kilen, teacher, and Melissa Olson and Brad Striegel as students. The school is a replica of Almont's first school.



Men who have furnished music through the years for school functions gathered together for a song fest at the reunion program. Left to right, Chris Halvorson, Margido Willman, Roman Peterson, Sig Peterson, Vernon Knutson, Marshall Feland, Harold Halvorson, Joel Johnson, James Harper, Harold Foley, Gene Harper, Leon Jacobson and Duane Johnson.



## HISTORY OF ALMONT HIGH SCHOOL

On January 8, 1917, the Almont Commercial Club appointed a committee to draw up and circulate a petition for a new school, including a high school, of sufficient size for the community. The 1917 class of 8th graders had 17 members and played an important part in this action. The Commercial Club wanted them to be able to attend high school and not have to leave the community. The committee appointed was: E. W. Hyde, C. A. Knutson, and N. E. Becklund.

A Special School Election was held on Saturday, March 31, 1917, for the purpose of determining the following question: "Of erecting a two-story, four-room school building with full basement in block nineteen in Filkins Second Addition to the town-site of Almont, Morton County, North Dakota".

The votes cast were, 59 for and 41 against. A majority vote was need to go ahead, so the Almont High School was on its way. School Board members at that time were: Theo. O. Feland, President; Rickart Olson and N. B. Erlandson, Directors; Oscar G. Thorson, Clerk; and N. E. Becklund, Treasurer.

The new school was ready for occupancy after the Christmas vacation and a class of 20 Freshmen were the first high school students. The Commercial Club appointed a committee of G. H. Anderson, C. E. Kelsven, and E. W. Hyde, to take charge of dedication exercises for the new school house. Dedication was set for Friday, April 12, 1918. Speakers were Mandan attorney, John F. Sullivan, County Supt. of Schools, H. K. Jensen, and President of Sims District School Board, Theo. O. Feland.

The Almont High School has always tried to serve the general community. On June 13, 1919, the first community 8th grade graduation was held when pupils from five school districts received their diplomas. Graduates were from Sims District No. 8, Almont & 4 other schools; Columbia District No. 25, Feland District No. 28; Olin District No. 26; and Valley Forge District No. 21. Speakers were: Major James M. Hanley of Mandan, Minnie J. Nielson, State Superintendent of Public Instruction, and H. K. Jensen, Morton County Superintendent of Schools. After the program and presentation of diplomas, the people were served ice cream which the school board members had generously furnished.

The first High School class graduated May 25, 1920 and in 1921, a second high school teacher was added to the faculty as there were now students in all four years of the courses.

In June, 1928, the School District decreed that there should be an addition built on the present school house for the amount of \$20,000, with 96 ballots cast in favor of the issuance of the necessary bonds. while 44 were against. The new wing furnished the school with an up-to-date gymnasium auditorium, and two large additional classrooms. The School Board at this time was Rickart Olson, President; C. A. Knutson and John Jacobson, Directors; Oscar G.



Thorson, Clerk and N. E. Becklund, Treasurer. Dedication services were held on January 27, 1929, with Deputy County Supt. Chas. A. Bugbee as speaker of the evening.

The first high school basketball team played their first game in the new gymnasium on January 11, 1929. At the close of the basketball season, a tournament was held in Carson, with the team making the trip by sleigh. The girls also organized a basketball team. Basketball has continued to be one of the favorite school activities.

School Board Members who deserve special mention for long terms of service are: Theo. Feland who served around 30 years until his death in 1925, Rick Olson who had 35 years of service as a director to his credit, Oscar Thorson who was clerk of the school board for about the same length of time, and Neils Becklund who was treasurer for 22 years. These men worked together to secure the best of educational facilities for the community.

In 1937, Almont High School began planning their first year book, published by the Senior Class. That year there was a High School Orchestra and the next year a School Band. Various musical groups have been a part of the school's activities during the years. In 1952 the Almont High School Mixed Chorus participated in the District 5 Music Festival in Bismarck and received a rating of excellent by the judges.

In the Spring of 1958, a Citizens' Committee composed of Sig Peterson, chairman, Harvey Thorson, E. E. Templeton, Ida Olson, and Thelma Klingensmith, secretary; and the School Board worked with the surrounding school districts to form a new and larger district through reorganization. The vote was 245 for and 23 against reorganization. The School Board at this time was Sig Peterson, President; Marvin Olson and Lawrence Renner, Directors; Edmund C. Reeff, Clerk; and Everett Olson, Treasurer.

Another addition to the school building was made in 1962 when the district voted 115 for to 7 against building two additional classrooms and two smaller rooms to the front of the building. At this time the school board was Duane Johnson, President; Conrad Christianson, Lawrence Renner, John Hellman, and Levi Dawson, Directors; Art Feland, Clerk; and Everett Olson, Treasurer. There were now 61 in high school with four high school teachers and four grade teachers.

The latest addition was the erection of a new gymnasium when the district on July 27, 1965 voted 100 for to 26 against the new bonding for the building. The old gymnasium was made into a library, industrial arts shop room, and some class rooms. The School Board at this time was composed of: Levi Dawson, President; Jake Larson, Joel Johnson, Norman Kilen, and William Bethke, Directors; Lawrence Renner, Clerk; and Everett Olson, Treasurer. Dedication services for the new gymnasium and library were held February 19, 1967 with two Almont alumni as speakers, Leon B. Olson, Williston Superintendent of Schools, and Thelma H. Klingensmith, Morton County Superintendent of Schools.

Special appreciation is given to John M. Page, Almont School Administrator, who promoted and carried the responsibility for these two additions to the school building that have meant so much to the school and the community as a whole.

A highlight of the Almont High School was the Jubilee High School Reunion held June 27 and 28, 1970 when graduates of all classes from 1920 through 1970 with teachers and friends met for a time of fellowship and renewing old friendships.

By Thelma H. Klingensmith

### (ALMONT HIGH SCHOOL)

It really isn't important  
When you went to Almont High  
As we're united now as common kin  
Though 50 years have passed by.

Our school has grown since those early days  
But to some it will seem quite small!  
And even though we're behind in many ways  
We can still stand very tall—

For as the replies came back day by day  
It was really a revelation,  
To see how well you all had done  
In the line of an occupation.

From the registered nurse to the engineer  
To the doctor, attorney, and teacher,  
The secretary, accountant, and pilot too  
Serviceman, beautician, and preacher.

There are missionaries spreading the word of God  
Willing musicians with talent too  
Policemen, mechanics, and farmers galore  
All part of our Alumni crew.

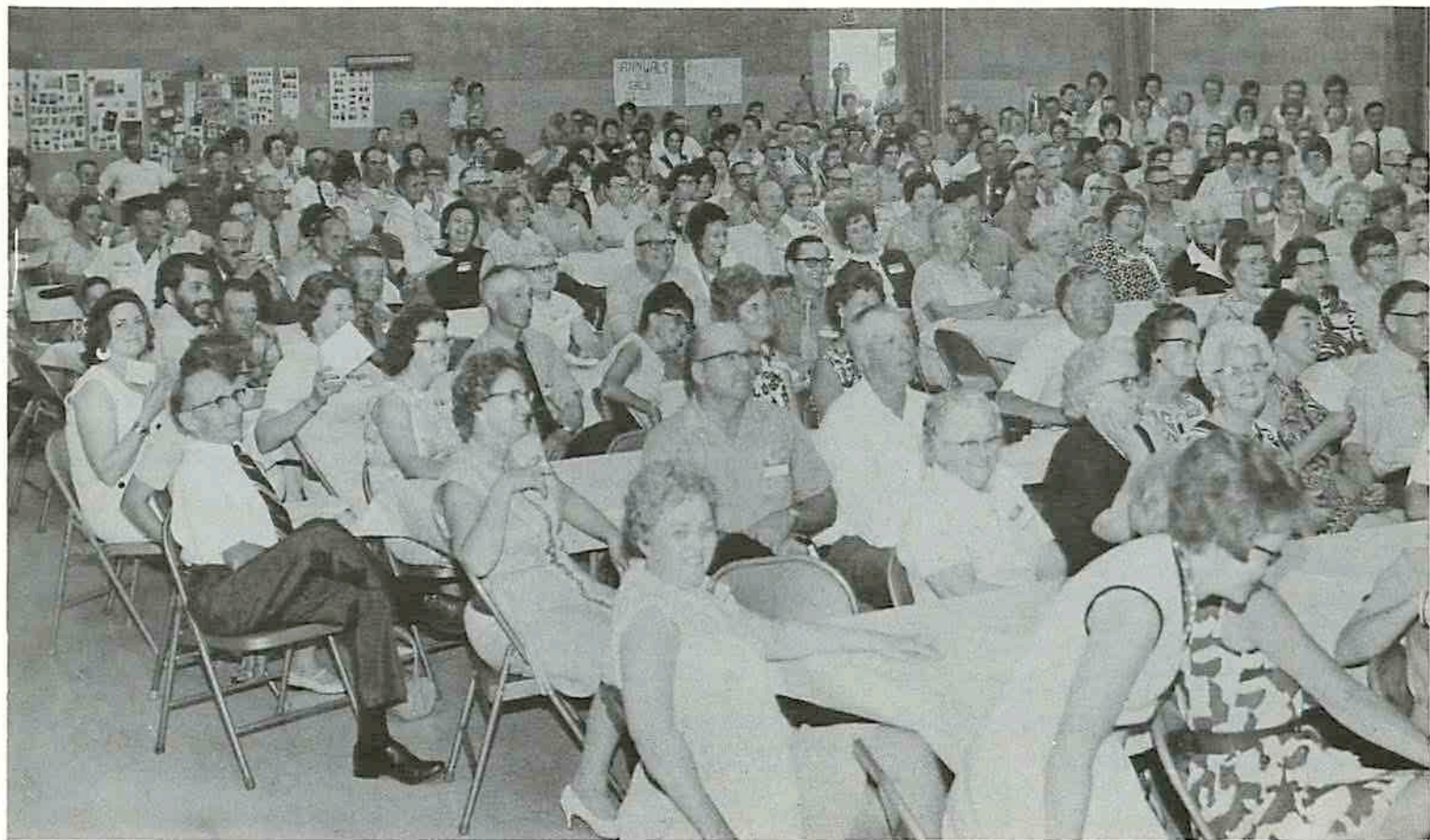
Yes, in all fields and walks of life  
We can boast of famous grads—  
But let us also keep in mind  
The scores of Mothers and Dads!

For in spite of unrest and inner struggle  
Of drugs, hippies, and a generation gap;  
There's still no substitution for parents  
To be found anyplace on the map!

If we formed a picture with efforts achieved  
The result would be a lovely design.  
For your contribution to this land of ours  
Is a benefit to all mankind!

Lillian Pederson  
Mrs. Roman Peterson





The program proved to be highly entertaining and enjoyable as shown by a section of the audience.



\*Pictures were taken by Ernest Feland, photographer, with the results appearing in this booklet.

Visiting in the evening and group singing preceded a dance at the Legion Hall where streamers and balloons furnished a gay setting for an evening of fun. Music was furnished by George Eckroth and his Orchestra.

Local churches were filled on Sunday. At 1 o'clock, picnics in four different locations according to decades which included a barbecue were well attended. Visitors went from place to place renewing old acquaintances all afternoon until farewells began which could be heard far and near. Many expressed the hope and desire that another would be planned in the not too distant future.

The following sentiments penned by a graduate, Eleanor Pederson Hillemann, summed up and expressed the feelings of many:

We've come from many states and cities  
to re-affirm our loyalty  
To loved ones, friends, this school of learning  
In Almont, our community.  
And when the last goodby is spoken  
And hearts with mem'ries, travel back

Each of his own field of endeavor,  
We will recall there was no lack  
Of genuine hospitality  
Of good times, fun galore—  
This fifty-year school reunion  
We'll remember o'er and o'er!

## SONGS

Tune: "This Land is Your Land"

As we were traveling  
Those ribbons of highway  
We thought of schoolmates  
A travelin' skyways  
To reach the home town  
In North Dakota  
Now more than just a memory.

As thoughts are wending  
That stairway of school years  
Recalling teachers  
Who worked to guide us,  
Remembering dreams, hopes, and  
fond ambitions  
This school was built for you & me.

CHORUS: This school was your school  
This school was my school  
From the roaring 20's  
To the dawning 70's  
And now we're gathered  
To meet old classmates;  
This school was built for you and me.

Words by Eleanor Pederson Hilleman  
San Fernando, California

Tune: "There's a Long Long Trail"

After fifty years of waiting  
We grads have all come back  
Though the school has grown bigger  
And there is no railroad track.  
There've been times, I'm sure we wondered  
If the school would float away  
But we know our Alma Mater  
Dear old Almont High will stay,

Words by Burton Nelson

Tune: "Oh, Mr. Moon"

Almont High School  
Good old Almont High  
We are here to sing your praise  
Almont High School  
Good old Almont High  
We're the kids you helped to raise  
Some teach our schools  
Others till the soil  
Many keep our homes  
A few may drill for oil  
So Almont High School  
Don't forget that you  
Had a major part in  
Helping us to start in  
Whatever we chose to do.  
Words by Burton Nelson

Lewisburg, Pennsylvania

## ALUMNI REUNION COMMITTEES

The success of the AHS Reunion can be credited to the general chairman and committees:

General Chairman—Nathalie Thorson

Recording Secretary—Lillian Peterson

Treasurer—Beatrice Wanstrom

Program—Nathalie Thorson, Regina Nilles, Marjorie Peterson, Audrey Striegel, Pat Anderson

Buffet Supper & Table Arrangements—Bonnie Ritz, Irene Olson, Nettie Hansen, Dolly Feland, Marian Anderson, Carol Hoovestol, Carol Ritz, Minnie Ritz

Registration—Harvey Thorson, Burton Hoovestol, Beatrice Wanstrom

Dance—Bob Timpe, Leroy Ritz

Publicity—Thelma Klingensmith, Marjorie Peterson

Bulletin Boards—Cora Monson

Welcome Banner—Cora Monson, Karen Olson

Tours of School—LaVonne Hunter, Lillian Peterson, Cora Monson, Mary Jane Thorson, Arlene Kilen, Arlyne Erhardt

Seating Arrangement—Alden Olson, Warren Hoovestol, Conrad Christianson

Reunion Booklets—Lillian Peterson, Sig Peterson, Edith Skjolsvik

Photographer—Ernest Feland assisted by Lester and Pat Feland

Housing—Regina Nilles

Transportation—Beverly Ringham

We hope you have enjoyed this anniversary booklet. Addresses were omitted because of space and since they change so often with the fast pace of our world today. However, we have compiled a list of alumni and will be willing to mail any addresses upon request.

Forgive us for any mistakes we have made—they were not intentional.

Thanks to the many who helped with the reunion and to those who were willing to give of their time and money to attend.

Reunion Booklet Committee,  
Lillian Booklet Committee,  
Edith Skjolsvik  
Jill Anderson  
Darnell Christianson



# ALMONT HIGH SCHOOL TEACHERS

1917-1970

1917-1918	Mrs. G. H. Anderson (deceased)	1937-1942	*Mabel L. Feland (Mrs. George Ferguson)
1918-1919	Albert K. Goeschel	1937-1938	Betty Kibbe
1919-1921	Charles A. Bugbee	1937-1938	Carol Lunde
1920-1921	Mabel Adele Olson	1937-1940	Carlyle Challgren (deceased)
1921-1922	Laura Strangstadlien (deceased) T. Brudeset (deceased)	1938-1939	Marion Ronsberg
1922-1932	Agnes M. Aymond (Mrs. Chris Halvorson)	1939-1940	*Lowell Britton (music)
1922-1923	Henry Tellberg	1940-1941	Earl J. Schnell
1922-1928	Agnes Albrecht (Mrs. Henry Peck) (deceased)	1940-1941	Marian Schuster
1923-1925	E. W. Froemke (deceased)	1941-1942	*Mrs. Chris Halvorson
1925-1928	Charles De Noyer (deceased)	1941-1943	Charlotte Pathmann (Mrs. Charlotte Otterberg)
1928-1930	L. G. Klopfliesch	1941-1942	Emil F. Lee (deceased)
1929-1930	Coralynn Sorenson	1943-1944	A. M. Wiley (deceased)
1930-1933	Ernest Baird	1943-1944	Frank Simmons
1930-1935	*Arloleen Cameron (Mrs. Melvin Jacobson)	1944-1945	Mary Halsell Cunningham
1930-1933	David Wilkes Kelly	1944-1945	J. C. Cunningham
1933-1937	H. W. Carlson	1944-1946	*Hilda Johnson
1936-1937	Mrs. H. W. Carlson (music)	1945-1946	George A. Olson Florence Kuller (Mrs. Florence Porsborg)
1935-1937	Margaret Mary Lambe	1946-1949	T A. Bosworth (deceased) Anna Bosworth
1935-1938	Leon Rockne		

1946-1947 \*Gordon Olson  
 1947-1948 Lillie Dunning (deceased)  
 1948-1949 \*Vendora Johnson  
 1949-1951 Edward Shanks  
 1949-1950 \*Frances Nelson (Mrs Willard Rusch)  
 1949-1950 Carol Atkinson (music) (deceased)  
 1950-1951 Edmund David McGinnis (Rev.)  
 1950-1951 T. P. Lenhardt  
               Merton J. Lassey (deceased)  
 1951-1956 \*Gilbert Holle  
 1951-1954 \*Thelma Klingensmith  
 1954-1955 Axel Ekblod (deceased)  
 1955-1957 Philip Johnson (music)  
 1955-1956 Edward Sundby  
 1956-1961 Waldemar Maas  
 1956-1958 Gerald Offerdahl (deceased)  
 1957-1959 Wesley W. John  
 1958-1962 Harold Foley (music)  
 1958-1961 Lawrence Sailer

1959-1960 Roy E. Becker  
 1961-1967 John M. Page  
               Olga M. Page  
 1961-1963 Donald F. Hoffman  
 1962-1963 Bruce Hanson  
 1962-1963 Duane Bauer (music)  
 1963-1965 Richard Ouren  
 1964-1965 Gilbert A. Cusey  
 1965-1970\* Duane Hoovestol  
 1965-1966 Theodore W. Walters  
               Fred J. Hessinger  
 1966-1969 Gerald A. Stenehjem  
 1966-1970 \*Lillian Peterson  
 1967-1969 Vira M. Stenehjem  
 1967-1970 \*Ralph Berger  
 1968-1970 Dennis Boyd  
 1969-1970 Robert C. Oberg  
 1969-1970 Diane Kuether  
 1969-1970 Mrs. Ernest Hobbie (Music)  
 \* Attended AHS Reunion

## ALMONT HIGH SCHOOL ALUMNI DIRECTORY

### CLASS OF 1920

Edith Bird (Mrs. Alfred Stigen)  
Thelma Hyde (Mrs. Don Klingensmith)  
Andrew Willman

### CLASS OF 1921

Alice Anderson (Mrs. Archie Ternstrom)  
Verna Bird (deceased)  
Esther Erlandson (Mrs. William Stuart) (deceased)  
Edith Malone (Mrs. Edgar Skjolsvik)

### CLASS OF 1923

Wallace Hyde (deceased)  
Aalga Knudson (Mrs. Ralph Fero)  
Katherine Malone (Mrs. George Kaelberer)  
Ida Mitzman

### CLASS OF 1924

Evelyn Erlandson (Mrs. Arnold Torgerson)  
Viola Knutson (Mrs. Walter Moore)  
Mary Malone (Mrs. Harold Weiss)  
Ruth Malone (Mrs. Stan Abraham)  
Ragna Olson (Mrs. Bill Knutson)  
Volborg Peterson (Mrs. Bert Fisher)  
Anna Timpe (Mrs. C. A. Lecy)  
Mary Timpe (Mrs. Floyd Harwood)  
Elsie Willman (Mrs. Elsie McKenzie)

### CLASS OF 1925

Paul Hansen (deceased)  
Randeem Hoovestol  
Theodore Kaelberer

### CLASS OF 1926

Evelyn Bateman (Mrs. Ralph Peterson)  
Norma Erlandson (Mrs. Clarence Christianson)  
(deceased)

Laurin Hyde  
Anna Kaelberer (Mrs. Gerhard Geunther)  
Ingeborg Nyquist (Mrs. Fritz Trovik)  
Gertie Olson (Mrs. Alfred Telford)  
Georgia Stoeckel

### CLASS OF 1927

Victoria Feland (Mrs. Lloyd Schollert)  
Fred Holritz  
Mimi Nyquist (Mrs. Oscar Hoger)  
Sig Peterson  
Lois Templeton (Mrs. Lois Kuns)  
Lucille Templeton (Mrs. Ben Frelleson)  
Ruth Torgerson (Mrs. Bill Terwedo)  
Grace Willman (Mrs. Carl Thor)

### CLASS OF 1928

Howard Hyde (deceased)  
Borgny Jacobson (Mrs. Frank Toepke)  
Leon Jacobson  
Alton Olin  
Jerald Olin  
Regina Timpe (Mrs. Clarence Nilles)





Class of 1920—Thelma Hyde Klingensmith, Edith Bird Stigen, Andrew Willman.

#### CLASS OF 1929

Mabel Feland (Mrs. George Ferguson)  
Arthur Harris  
Lillian Knutson (Mrs. John Heinle)  
Myron Knutson  
Reuben Olson  
Dorothy Templeton (Mrs. Harry Bettencourt)  
Lois Williams (Mrs. Leslie Klopfliesch)

#### CLASS OF 1930

Lucille Anderson (Mrs. Jack Magnus)  
Ruth Bakken (Mrs. Gus Permann)  
Harold Harris  
Henry Nyquist  
Ida Olson (Mrs. Rudy Feland)  
Helen Thor (Mrs. Irvin Cotton)  
William Weiss  
Enoch Willman

#### CLASS OF 1931

Louise Aanstad (Mrs. Lars Handegaard)  
Joseph Emmanuel Bakken  
Deloris Feland (Mrs. Delores Morelle)  
Howard Knutson  
Viola Olson (Mrs. Theodore Moers)  
Cuno Peterson (deceased)  
Dagmar Pederson (Mrs. James Stoeckel)  
James Stoeckel  
Lillian Peterson (deceased)  
Mary Madaleen Templeton  
Nick Timpe  
Margido Willman

#### CLASS OF 1932

Verna Anderson (Mrs. Paul Simonson)  
Arthur Feland  
Rudolph Feland  
Minnie Fulton (Mrs. Claude Ritz)  
Vendora Johnson  
Alma Olson  
Raymond Olson  
Ruth Pederson (Mrs. Lowell Britton)  
Cora Seim (Mrs. Oscar Monson)  
Stella Stiler (Mrs. Andy Tibor)  
Oscar Willman  
Marjorie Wright (Mrs. Harold Halvorson)

#### CLASS OF 1933

Ruth Bergstrom (Mrs. Ruth Short)  
Gertrude Christianson (Mrs. Mike Thiel)  
Maurice Jacobson  
Arnold Joersz  
Susie Seim (Mrs. Susie Pulis)  
Ethel Stoeckel (Mrs. Jerry Sullivan)  
Ralph Willman

#### CLASS 1934

Edward Atkinson  
Emma Johnson (Mrs. Raymond Beck)  
Christ Olson  
Yvonne Templeton (Mrs. Robert Roberts)  
Wallace Timpe



1921 to 1929—Front Row (left to right) Mabel Feland Ferguson, Lillian Knutson Heinle, Lois Templeton Kuns, Mimi Nyquist Hoyer, Regina Timpe Nilles, Ingeborg Nyquist Trovik, Evelyn Bateman Peterson. Second Row—Evelyn Erlandson Torgerson, Mary Timpe Harwood, Anne Timpe Lecy, Victoria Feland Schollert, Mary Malone Weiss, Valborg Peterson Fisher. Third Row—Sig Peterson, Jerald Olin, Edith Malone Skjolsvik, Alice Anderson Ternstrom, Ruth Torgerson Terwedo, Leon O. Jacobson. (Viola Knutson Moore, Ragna Olson Knutson, Alton Olin, not pictured)



#### **CLASS OF 1935**

Gordon Bakkan  
Alice Barstad (Mrs. Alice Handegard)  
Eileen Lois Becklund (Mrs. Bertil Friberg)  
Naomi Harris (Mrs. A. D. Woods)  
Kathleen Kelsven (Mrs. Burdette Edwards)  
Vernon Knutson  
Ida Olson  
Lillian Pederson (Mrs. Roman Peterson)  
Nellie Seim (Mrs. Dale Briscoe)

#### **CLASS OF 1936**

Clifford Anderson  
Robert Atkinson  
Louise Bahr (Mrs. William Cooper)  
Theresa Erhardt  
Eleanor Pederson (Mrs. Harold Hilleman)  
Steven Weibke  
Lillian Willman (Mrs. Leo Schneider)

#### **CLASS OF 1937**

Warren Becklund  
Mabel Christianson (Mrs. Alton Olin)  
Curtis Fallgren  
Clifford Giese  
Samuel Gillas  
Dorothy Lotspiech (Mrs. Russell Williams)  
Florence Stiler (Mrs. Arnold Olson)  
Gordon Templeton  
Olive Timpe (Mrs. Wilmer Held)

#### **CLASS OF 1938**

Arnold Barstad  
Phyllis Hyde (Mrs. Sylvan Grove)  
Marian Kelsven

May Olin (Mrs. Al Backstrom)  
Adeline Olson (Mrs. William Backsen)  
LeRoy Olson  
Lillian Olson (Mrs. Adam Hoffman)  
Ragnhild Peterson (Mrs. Erling Johanneson)  
Thelma Peterson (Mrs. Thelma Davidson)  
Laura Reetz (Mrs. Earl Erickson)  
Ann Weibke (Mrs. Floyd Grieves)

#### **CLASS OF 1939**

Gordon Anderson  
Lillian Hansen (Mrs. Peter Hallan)  
Burton Nelson  
Everett Olson  
Mildred Pederson (Mrs. Everett Olson)  
Margaret Willman (Mrs. Clarence Thor)

#### **CLASS OF 1940**

Esther Christianson (Mrs. Valance Klusman)  
Kathleen Fallgren (Mrs. Kathleen Straus)  
Helen Hoeger (Mrs. Evert Mainquist)  
Gudrun Kilen (Mrs. Norman Lorentzen)  
Beatrice Seim (Mrs. Elmer Wanstrom)  
Ruth Seim (Mrs. Johan Kilen)  
Ella Smordahl (Mrs. Adolph Sorestad)  
Evelyn Timpe (Mrs. Leonard Bachman)  
Ruth Willman (Mrs. Orval Olin)  
Carol Knutson (Mrs. Robert Atkinson) (deceased)

#### **CLASS OF 1941**

Wayne Becklund  
Conrad Christianson  
Doris Christianson (Mrs. Ralph Hickie)  
Fred Hoeger  
Duane Hyde  
Gaynelle Olin (Mrs. Harold Nesheim)



1930-1934—Front Row (left to right) Marjorie Wright Halvorson, Minnie Fulton Ritz, Verna Anderson Simonson, Ruth Pederson Britton, Alma Olson, Susie Seim Pulis, Cora Seim Monson. Second Row, Stella Stiler Tibor, Gertrude Christianson Thiel, Louise Aanstad Handegard, Dagmar Pederson Stoeckel, Ruth Bergstrom Short, Yvonne Templeton Roberts, Vendora Johnson. Third Row, William Weiss, Margido Willman, Chris G. Olsen, Art Feland.





1935-1939—Front Row (left to right) Eileen Becklund Friberg, Kathleen Kelsven Edwards, Nellie Seim Briscoe, Lillian Willman Schneider, Eleanor Pederson Hillemann, Mildred Pederson Olson, Thelma Peterson Davidson; Second Row, Vernon Knutson, Ida Olson, Lillian Pederson Peterson, Robert Atkinson, Mabel Christianson Olin, Olive Timpe Held, Laura Reetz Ericksen, Gordon Templeton; Third Row, J. Burton Nelson, Curt Fallgren, Clifford Bergstrom, Phyllis Hyde Grove, Marian Kelsven, Adeline Olson Backsen, LeRoy Olson



Wanda Olin (Mrs. Kenneth Berg)  
Arlene Olson (Mrs. Elmer Kaelberer)  
Noreen Olson (Mrs. Eddie Willman)  
Winona Olson (Mrs. Robert McCoy)  
Ardella Reetz (Mrs. Robert Sibert)  
Genevieve Stoeckel  
Harvey Thorson

#### **CLASS OF 1942**

Burton Hoovestol  
Beverly Kelsven  
Arden Olson  
Gordon Olson  
Marvin Timpe  
Edward Willman  
Lenore Weeks (Mrs. Oliver Wright)

#### **CLASS OF 1943**

Laverne Bahr (Mrs. Clarence Geise)  
Clara Christianson (Mrs. Marvin Wilkens)  
Rose Falgren (Mrs. Conrad Batemen)  
Fontabelle Hansen (Mrs. Leonard Clapp)  
Edwin Kilen  
Leon Olson  
Shirley Olson (Mrs. Joe Fitterer)  
Esther Schwemer (Mrs. Ardian Sandag)  
Eugene Thorson  
Mavis Weekes (Mrs. R. Allan)  
Jean Wohlman (Mrs. Tony Erhamtraut)

#### **CLASS OF 1944**

Betty Anderson (Mrs. Harold Geck)  
Thelma Barstad (Mrs. Thelma Bushnell)  
Dorothy Knutson (Mrs. Arnold Vollrath)  
Delbert Reetz  
Clifford Torgerson

#### **CLASS OF 1945**

Alta Barstad (Mrs. Roy Schaar)  
Claudine Christianson Gartner  
Richard Hoovestol  
Lois Olson (Mrs. Arlie Burgess)  
Joyce Willman (Mrs. Sven Johnson)

#### **CLASS OF 1946**

Roberta Anderson (Mrs. Arnold Boehm)  
Elvina Kary (Mrs. Roger Schultz)  
Colleen Knudson (Mrs. Wilbert Heid)  
Norida Knudson (Mrs. Marvin Hewitt)  
Frances Nelson (Mrs. Willard Rusch)  
Elaine Timpe (Mrs. Raymond Hochhalter)  
Arlene Wohlman (Mrs. Jack Thorpe)

#### **CLASS OF 1947**

Thornton Becklund  
Nathalie Hansen (Mrs. Harvey Thorson)  
Rosemary Kunkel  
Joyce Larson (Mrs. R. Middleton)  
Herbert Thorson  
Jean Timpe (Mrs. Leo Keller)  
Audrey Willman (Mrs. Archie Bethke)

#### **CLASS OF 1948**

Bernice Anderson (Mrs. Eugene Thorson)  
June Anderson (Mrs. Chester Kaelberer)  
Ruby Barstad (Mrs. Edwin Kilen)  
Vivian Christianson  
Clyde Hoovestol  
Irene Kary (Mrs. Alden Olson)  
Maryls Knutson (Mrs. Richard Dolezol)  
Rose Mary Kronberger (Mrs. Frank Kobilansky)  
Duane Johnson

Jaké Larson  
Audrey Nelson (Mrs. Leon Olson)  
Alden Olson  
Beverly Olson (Mrs. Bernard Ringham)  
Ione Olson (Mrs. William Wilson)  
Arvella Peterson (Mrs. Arvella Stauffer)  
Ronald Skjolsvik  
Marlene Torgerson (Mrs. Don Christofferson)  
Luella Wanstrom (Mrs. Kenneth Becker)

#### **CLASS OF 1949**

Mary Doll (Mrs. Mike Emter)  
Burton Fallgren  
Matt Hegel  
Marvin Joersz  
Robert Joersz  
Delores Kary (Mrs. Wallace Toepke)  
Clifford Knudson  
Donna Knutson (Mrs. Joel Johnson)  
Lois Larson (Mrs. Rhine Klaudt)  
Jack Olin  
Zona Olson (Mrs. Arden Olson)  
Corlyn Reeff (Mrs. Clyde Hoovestol)  
Gavis Ringham (Mrs. Richard Schaffer)  
Muriel Skjolsvik (Mrs. Alvin Bumann)  
Roger Thorson  
Joan Timpe (Mrs. William Kuebker)  
Robert Timpe

#### **CLASS OF 1950**

Alice Anderson (Mrs. Wilfred Bopp)  
Adam Hegel  
Matthew Hegel  
Delbert Olson  
Leo E. Timpe

#### **CLASS OF 1951**

Dauphine Anderson (Mrs. Jack Niebert)  
Obert Barstad  
Virginia Bond (Mrs. Owen Landon)  
Dale Harper  
Joel Johnson  
Audrey Ritz (Mrs. Cleon Striegel)  
Shirley Timpe (Mrs. Floyd Engbrecht)  
Gwen Trovik (Mrs. Rex Whitney)

#### **CLASS OF 1952**

Roger Becklund  
Earl Dawson  
Gloria Hanson (Mrs. Martin Doll, Jr.)  
Ann Kary (Mrs. Adam Gratz)  
Eunice Klingensmith (Mrs. Hilary Evans)  
Joan Knudson (Mrs. Duane Johnson)  
Adeline Larson (Mrs. H. G. Thiede)  
Ray Olin  
Charlene Reeff (Mrs. Albert Duppong)

#### **CLASS OF 1953**

Audrey Anderson (Mrs. Les Walton)  
Perpetua Doll (Mrs. Raymond Hegel)

#### **CLASS OF 1954**

Jerome Hegel  
Angie Kary (Mrs. Gary Tressel)  
Caroline Larson (Mrs. Wayne Schwartz)  
LaVonne Ritz (Mrs. Leonard Hunter)  
Ann Marie Stegmier  
Ramona Zemple (Mrs. James Harper)

#### **CLASS OF 1955**

Marshall Feland  
James Harper  
Iona Hoovestol (Mrs. Jerry Hegel)  
Warren Hoovestol  
Leona Monson (Mrs. Augie Schaff, Jr.)  
Leonard Olson  
Charles Reeff (deceased)  
Leroy Ritz  
Gary Tavis

#### **CLASS OF 1956**

Robert Bachler  
Bonnee Christianson (Mrs. Leroy Ritz)  
Stephen Doll  
Corma Feland (Mrs. Lyle Reinke)  
Theodore Hellman  
Lester Hogan  
Darrell Hoovestol  
Ramona Knudson (Mrs. Clay Sorenson)  
Clarence Nilles, Jr.  
Marvin Ritz  
Donavon Theil

#### **CLASS OF 1957**

Alfred Anderson  
Clara Doll (Mrs. John Wetsch)  
Janet Feland (Mrs. Robert Hanson)  
Eugene Harper  
Leonard Hegel  
Jerald Hellman  
Ramon Zemple

#### **CLASS OF 1958**

Kathy Bahm (Mrs. Joe Berzel)  
Carol Hauge (Mrs. Marvin Ritz)  
Charlotte Kilen (Mrs. Eddy Thiel)  
LoAnn Olin (Mrs. Eldon Leach)  
Janice Ritz (Mrs. Leonard Olson)

#### **CLASS OF 1959**

Marlin Bachler  
Geraldine Doll (Mrs. Vernon Dittus)  
Dorothy Hoovestol (Mrs. Robert Tyler)  
Duane Hoovestol  
Virginia Miller (Mrs. Marlin Bachler)  
Jeanette Nagel (Mrs. Everette Steinmetz)

#### **CLASS OF 1960**

Glenda Anderson (Mrs. Clifford Buchanan)  
Bernice Erhardt (Mrs. Paul Asplund)  
Martin Erhardt  
Roger Gustafson  
Roger Hoovestol  
Linda Jacobson (Mrs. Eugene Harper)  
Mary Kary (Mrs. Dave Hoffman)  
Forest Rosendahl  
Rowan Wanstrom (Mrs. Forest Rosendahl)

#### **CLASS OF 1961**

Beverly Brinkman (Mrs. James Walth)  
Lucille Doll (Mrs. Jerome Messer)  
Lee Harper  
Roger Hellman  
Paul Myers





1944-1947—Front Row (left to right) Jean Timpe Keller, Audrey Willman Bethke, Nathalie Hanson Thorson, Dorothy Knutson Vollrath, Alta Barstad Schaar; Second Row, Joyce Larson Middleton, Frances Nelson Rusch, Betty Anderson Geck, Elaine Timpe Hochhalter, Roberta Anderson Boehm, Lois Olson Burgess; Third Row, Thornton Becklund, Clifford Torgerson, Bert Fallgren, Richard Hoo-vestol.

### **CLASS OF 1962**

Mary Bahm (Mrs. Dale Carlson)  
Alice Doll (Mrs. Gary Butler)  
Judy Doll (Mrs. Don Jones)  
Judy Gustafson (Mrs. Idar Handegard)  
Charleen Hoerner (Mrs. Charles Hauff)  
Marilyn Miller (Mrs. Gary Mertz)  
Lorna Monson (Mrs. Don Bender)  
Marilyn Olson (Mrs. Marilyn Bondeson)  
John Page  
Ardythe Peterson (Mrs. Arnold Mortenson, Jr.)  
Diane Thiel (Mrs. Eugene Simpier)  
Dwyane Thiel

### **CLASS OF 1963**

Maxine Backler (Mrs. Frank Steckler)  
Ardys Brinkman (Mrs. Ardys Lehde)  
Ernest Erhardt  
Ernest Feland  
Paulette Geck (Mrs. Paulette Kunz)  
Claudia Hellman (Mrs. Donald Heinle)  
Carol Huber (Mrs. Carol Dittus)  
Norma Kilen  
Raymond Myers  
Linda Nagel (Mrs. Linda Keller)  
Darrell Nilles  
Eugene Peterson  
Carlyle Reef  
Mary Ann Renner (Mrs. Tharen Kilen)  
Veralyn Wanstrom (Mrs. Lance Combs)

### **CLASS OF 1964**

Cheryl Christianson (Mrs. Eric Franklund)  
Arnold Erhardt  
Deane Feland  
Doris Feland (Mrs. Marv Becker)  
Diane Erhardt (Mrs. Eugene Kohler)  
Nancy Gustafson (Mrs. Dave Dvorak)  
Gerald Hoerner  
Carol Kilen  
Terry Miller  
Diane Olson (Mrs. Paul Myers)  
Jerome Olson  
Karen Olson  
Rodney Peterson  
Jean Wetzel (Mrs. John Bachler)  
Jerome Willman

### **CLASS 1965**

Ronald Bahm  
Sandra Christianson (Mrs. Ross Roberts)  
Kathy Doll (Mrs. Linus Wehri)  
Lester Feland  
Ginger Gustafson (Mrs. Gene Peterson)  
Donald Hellman  
Gary Knutson  
Ronald Neibauer  
Stuart Olson  
Larry Renner  
Jeanette Wetzel (Mrs. William Doll)





1948-1949—Front Row (left to right) Rose Mary Kronberger Kobilansky, Beverly Olson Ringham, Marlys Knutson Dolezal, Zona Olson Olson; Second Row, Audrey Nelson Olson, Luella Wanstrom Becker, Lois Larson Klaudt, Gavis Ringham Schafer, Carolyn Reef Hoovestol; Third Row, Marlene Torgerson Christofferson, Irene Kary Olson, Alden Olson, Vivian Christianson, Bernice Anderson Thorson, Clyde Hoovestol.



### **CLASS OF 1966**

Lawrence Erhardt  
Larry Hoovestol  
Orletta Kilen  
Robert A. Kronberger  
Candy Gustafson (Mrs. Stuart Olson)  
Danny Renner  
Linda Smith

### **CLASS OF 1967**

Jane Patricia Anderson (Mrs. Lester Feland)  
Jean Penelope Anderson (Mrs. Francis Pulver, Jr.)  
Gene Bahm  
Alex Doll, Jr.  
Carol Feland (Mrs. Warren Hoovestol)  
Patricia Feland (Mrs. Duane Hoovestol)  
Bruce Olson  
Lynn Peterson  
Lou Ella Wetzel  
Aaron Zemple

### **CLASS OF 1968**

Linda Bahm  
Timmy Christianson  
Linda Doll  
Charlene Erhardt  
Janice Erhardt  
Paul H. Genz  
Amy Kilen

Douglas Neibauer  
Elliot Olson  
Bruce L. Peterson  
Larry E. Smith  
Peggy Thorson (Mrs. Ralph Berger)  
Doreen Willman  
Kerry Wanstrom

### **CLASS OF 1969**

Randy Christianson  
Adolph Genz  
Rose Genz  
Arvin Kilen  
Danny Olson  
Joel Olson  
Edith Smith  
Charmaine Thompson  
Sharon Thorson  
Lucille Reef

### **CLASS OF 1970**

Terry Dawson  
Arlyne Earhardt  
Dennis Erhardt  
Arlene Kilen  
Joe Miller  
Mary Jane Thorson  
Orlyn Wanstrom

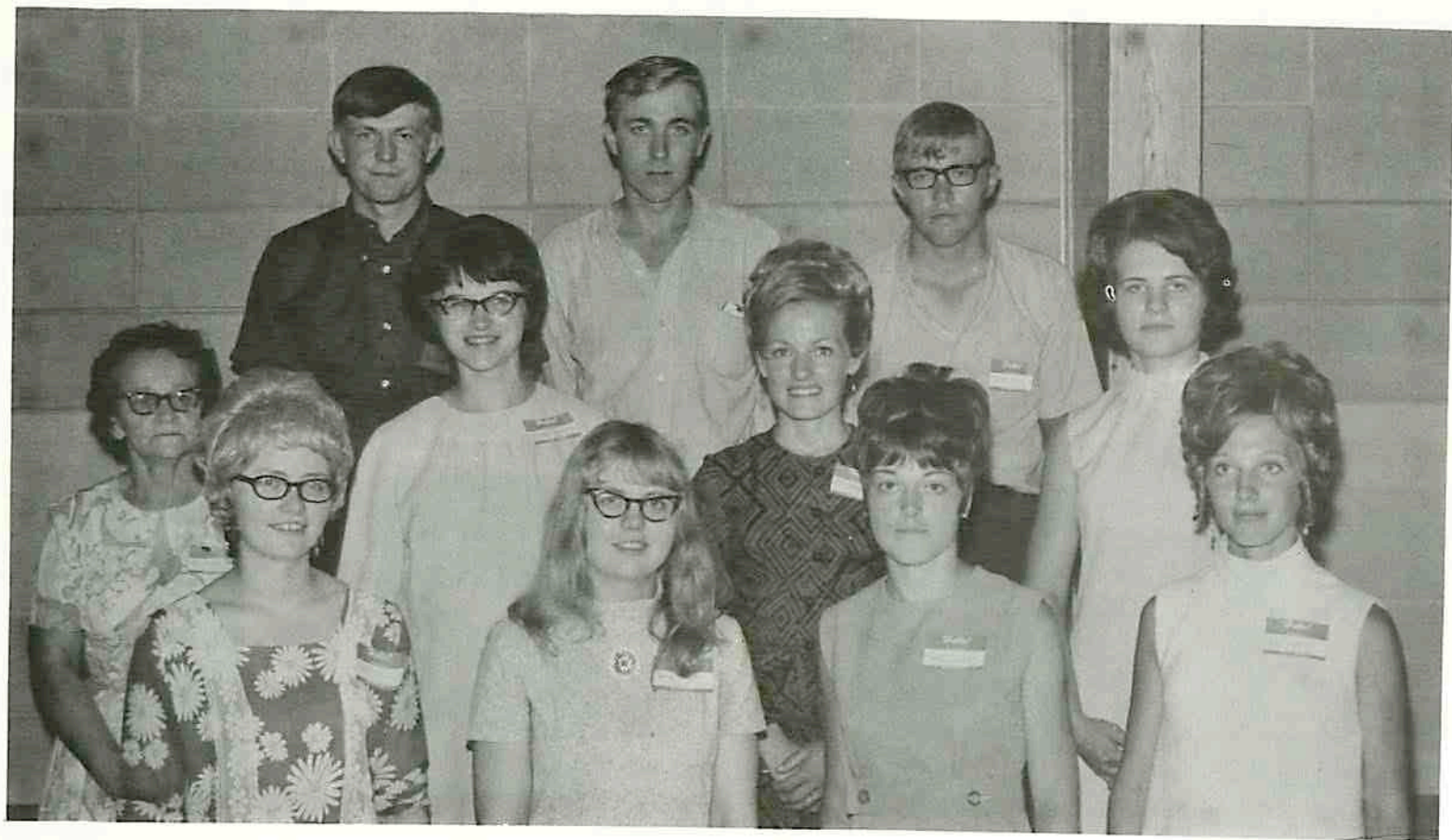


1950-1959—Front Row (left to right) Carol Hauge Ritz, Audrey Ritz Striegel, Adeline Larson Thiede, Gloria Hanson Doll, Ramona Zempel Harper, Leona Monson Schaaf, Charlotte Kilen Thiel, Corma Feland Reinke, Janet Feland Hanson; Second Row, Bonnee Christianson Ritz, Eunice Klingensmith Evans, Dauphine Anderson Nebert, Audrey Anderson Walton, LaVonne Ritz Hunter, Shirley Timpe Engbrecht, Virginia Bond Landon, Marshall Feland, Allen Fallgren, Gene Harper; Third Row, Marvin Ritz, Roger W. Becklund, Ray Olin, Jim Harper Donavon Thiel, Alfred Anderson, Ramon Zempel, Darrell Hoovestol, Warren Hoovestol.



1960-1965—Front Row (left to right) Doris Feland Becker, Diane Erhardt Kohler, Karen Olson, Ginger Gustafson Peterson; Second Row, Linda Jacobson Harper, Glenda Anderson Buchanan, Lorna Monson Bender, Stuart Olson, Donald Hellman, Roger Hellman, Dwayne Thiel, Roger Hoovestol, Roger Gustafson, Deane Feland, Ernest Feland.





1966-1969—Front Row (left to right) Orletta Kilen, Amy Lou Kilen, Candace Gustafson Olson, Penny Anderson Pulver, Second Row, Lucille Reef, Peggy Thorson Berger, Pat Anderson Feland, Carol Feland Hoovestol; Third Row, Kerry Wanstrom, Aaron Zempel, Arvin Kilen.



Class of 1970—Orlyn Wanstrom, Arlyne Erhardt, Dennis Ehardt, Terry Dawson, Joel Miller, Arlene Kilen, Mary Jane Thorson.

